

Product

EESF® End Hooked 1.0/50

Type

Hooked Steel Fibers

Aspect Ratio (L/d)

50.00



Fiber House

Experts in Fibers Reinforced Concrete

**EGYPTIAN**  
**EUROPEAN**



Steel Fiber®

# Product Data Sheet

## EESF® End Hooked Steel Fiber 1.0/50



### Product Description

EESF® End Hooked Steel Fiber 1.0/50 is a low carbon, cold-drawn steel wire designed to reinforce slab on grade concrete and enhance reinforced constructional elements with shrinkage crack control, improve shear resistance, and increase tensile and flexural strengths.

### Advantages

- Prevent cracks due to early-age shrinkage .
- Better cohesion in the fresh concrete.
- Increase flexural strength and shear resistance.
- Improve load capacity and concrete ductility.
- Increase abrasion, fatigue resistance.
- Enhance concrete in its hardened state.
- Provide ultimate performance under intense conditions

### Usage

- Industrial floor slabs
- Warehouses , Factories.
- Commercial and Residential S.O.G. and screed flooring.
- Bridge decks, overlays and pavements.
- Concrete Roads, Parking Areas .
- Precast concrete applications and slabs on pile.
- Shotcrete.
- Tunnel, linings and slope stabilizations .
- Mass concrete and composite deck construction.
- Military Purposes

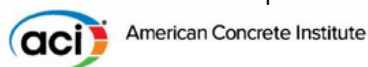
### Specification Compliance

EESF® End Hooked Steel Fiber is manufactured according to AISI 1008-1010 standards, ASTM A820

### Dosage

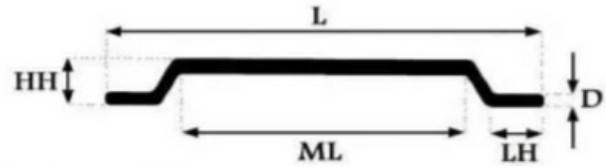
Recommended Dosage 10 : 36 kg/m<sup>3</sup> according to aci  
Add directly to the concrete mix while being mixed either at the batch plant or the truck mixer.

Mix for a minimum of 5 minutes at maximum mixing speed after addition of fibers to ensure complete distribution of the fibers.



### Packing

25kg double layered carton bags.



Circular End Hooked Cross section

### Product Data

Width (d)	1 mm ± 0.5 mm
Length (L)	50 mm ± 3 mm
Middle Length (ML)	40 mm ± 3 mm
Hook Height (HH)	2.50 mm ± 0.40 mm
Hook Length (HL)	5 mm ± 1 mm
Density	7,870 kg / m <sup>3</sup>
Melting point	1,480°C
Tensile Strength	1200 N/mm <sup>2</sup>
Aspect Ratio(L/deff)	50

### Chemical Composition

Carbon (C)%	0.09% ±0.01%
Silicon (SI)%	0.08% ±0.03%
Manganese (Mn)%	0.70%±0.10%
Phosphorus (P)%	≤0.015%
Sulphur (S)%	≤0.03%





**EGYPTIAN EUROPEAN FOR  
MANUFACTURING STEEL FIBER**

Villa 42 - Alorouba Axis South Academy (B) 5th Settlement New Cairo - 11865 - Egypt

This certificate verifies that the above Organisation has been audited on the above address for scope as under and found to be in accordance with the requirements of Management system.

**ISO 9001:2015  
Quality Management System**

**Manufacture of Steel Fiber for Ready- Mix Concrete**

Certificate No. : Q-21091701

Date of initial registration	17-09-2021
Date of this certificate/Issue No.	17-09-2021
Certificate Expiry	16-09-2022*
Recertification Due	16-09-2024

\*After successful completion of Annual Surveillance Audit, New certificate will be issued.

This Certificate is valid per Rules and Regulations of ECL & also the surveillance audits conducted atleast once a year  
To check the certification validity please visit our website- [www.theecl.com](http://www.theecl.com) or contact at- [info@theecl.com](mailto:info@theecl.com)



  
Director

**Equalitas Certifications Limited**

Accreditation by International Accreditation Service, 3060 Saturn Street Suite 100 Brea, California 92821-1732, USA  
512, DDA 1, District Center, Janakpuri, New Delhi-110058, India, Ph: +91 11 46681431, 9540751844

Experts in Fibers Reinforced Concrete

**EGYPTIAN**  
**EUROPEAN**  
*Steel Fiber®*



## Applications



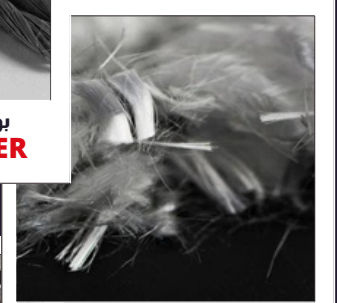
More of  
**FIBER**  
products



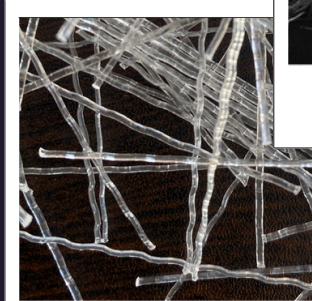
جلاسي فايبر EESF®  
**Glass Fiber**



بولي تويست فايبر EESF®  
**POLYTWIST FIBER**



بولي بروبيلين فايبر EESF®  
**POLYPROPYLENE FIBER**



بولي ماكرو فايبر PM-48 EESF®  
**POLY MACRO PM-48 FIBER**



(+202) 253 732 63  
(+20) 100 5700 531  
(+20) 100 5700 533  
info@eldemerigroup.com  
www.eldemerigroup.com

