

Product

EESF® Polymacro® PM48

Type

Macro synthetic fiber

Aspect Ratio (L/d)

62



Experts in Fibers Reinforced Concrete

**EGYPTIAN**  
**EUROPEAN**

*Steel Fiber®*

**EESF**  
S.A.E.

# Product Data Sheet

## EESF® PolyMacro PM-48



### Product Description

EESF® Macro synthetic Fiber PolyMacro® PM48 has been specifically designed for shotcrete applications and tunnel linings to increase impact and flexural resistance. Homogeneous Fiber distribution makes it possible to absorb energy in any point and any direction of the concrete segment; cracking resistance is considerably improved.

### Advantages

- Reduced Plastic Shrinkage Cracks
- Synthetic Fiber prevents the risk of corrosion compared to wire mesh reinforcement.
- Low static and low fuzz
- Good processing and excellent mechanical properties.
- Three-dimensional reinforcement of concrete mix is achieved
- Alternative to Crack Control Mesh
- Reduced Water & Chemical Permeability
- Increased Abrasion Properties
- Increased Impact Resistance
- Improved Durability

### Usage

- Internal Floor Slabs
- Water Retaining Structures
- Concrete Buildings
- Concrete Pavements
- Tunnels Linings & Segments
- External Hard Standings
- Pattern Imprinted Concrete
- Bridges
- Precast & Extruded Concrete
- Agricultural Areas
- Piling Concrete
- Shotcrete

### Speciation Compliance

## EESF® PolyMacro PM-48

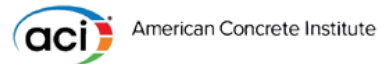
is manufactured according to to EN ISO 9001 standards and has full British Board

### Product Data

Composition	100% virgin copolymer / polypropylene
Type	Macro synthetic monofilament wavy structure
Length	48 mm (min tolerance 2%)
Standard	EN 14889 Part II Type II, ASTM C1116 Type III
Aspect Ratio	62
Color	Transparent
Specific Weight	0.91gr / cm3
Elastic Modulus	min. 3.6 GPa
Tensile Strength	640 MPa
Corrosion	Non-corrosive
Chemical Resistance.	Alkali and acid resistance
Melting Point	165° C
Magnetism	Non-magnetic

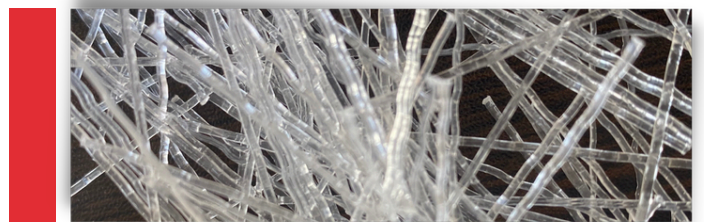
### Dosage

Doses of synthetic macro fibers varies between ( 1.8 and 4.5 ) kg/m3 depending on engineering requirements of the projects.



### Packing

5 kg - 9kg Carton Packs



Experts in Fibers Reinforced Concrete

**EGYPTIAN**  
**EUROPEAN**  
*Steel Fiber®*



**E-SF**  
S.A.E

## Applications



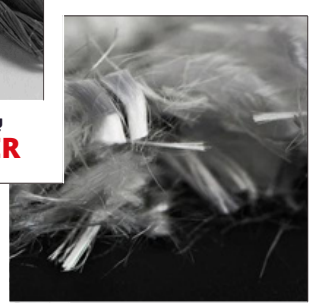
More of  
**FIBER**  
products



جلاسي فايبر EESF®  
**Glass Fiber**



بولي تويست فايبر EESF®  
**POLYTWIST FIBER**



بولي بروبيلين فايبر EESF®  
**POLYPROPYLENE FIBER**



استيل فايبر EESF®  
**Steel Fiber**



(+202) 253 732 63  
(+20) 100 5700 531  
(+20) 100 5700 533  
info@eldemerigroup.com  
www.eldemerigroup.com

